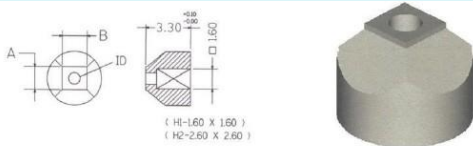
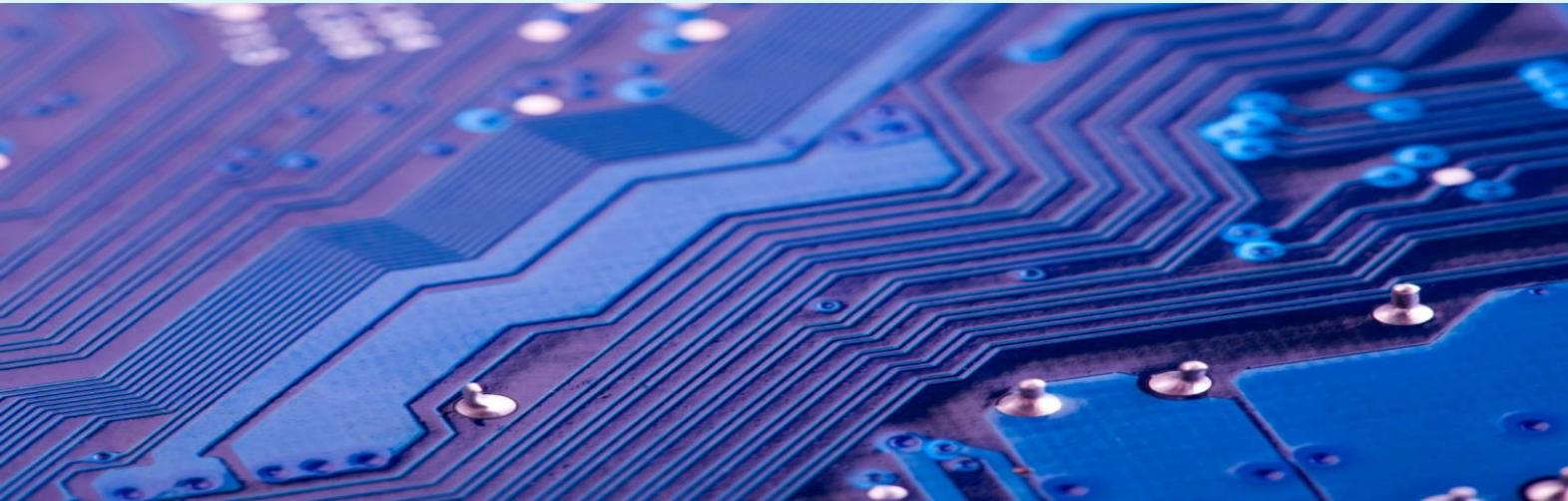
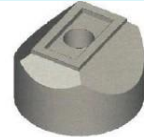
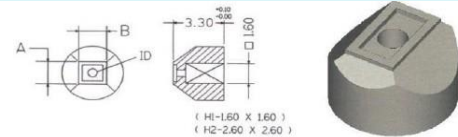
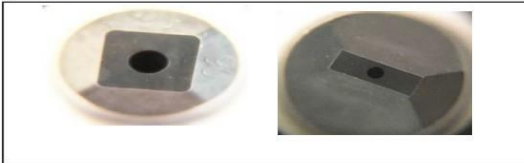


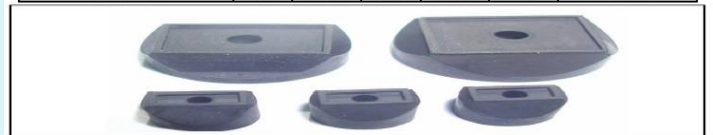
橡膠吸嘴



型號(常溫)	A		B		ID/內徑	杆型
	mil	mm	mil	mm	mm	接口 mm
RT-020-030-FT	19	0.50	300.76	0.25	H1-1.6	
RT-030-030-FT	30	0.76	300.76	0.35	H1-1.6	
RT-030-050-FT	30	0.76	501.27	0.35	H1-1.6	
RT-030-070-FT	30	0.76	701.78	0.35	H1-1.6	
RT-030-100-FT	30	0.76	1002.54	0.35	H1-1.6	
RT-040-040-FT	40	1.02	401.02	0.45	H1-1.6	
RT-040-060-FT	40	1.02	601.52	0.45	H1-1.6	
RT-050-050-FT	50	1.27	501.27	0.65	H1-1.6	
RT-050-100-FT	50	1.27	1002.54	0.65	H1-1.6	
RT-060-060-FT	60	1.52	601.52	0.90	H1-1.6	
RT-060-090-FT	60	1.52	902.29	0.90	H1-1.6	
RT-070-070-FT	70	1.78	701.78	1.00	H1-1.6	
RT-070-120-FT	70	1.78	1203.04	1.00	H1-1.6	
RT-080-080-FT	80	2.03	802.03	1.00	H1-1.6	
RT-090-090-FT	90	2.28	902.28	1.00	H1-1.6	
RT-090-110-FT	90	2.28	1102.79	1.00	H1-1.6	
RT-100-100-FT	100	2.54	1002.54	1.00	H1-1.6	
RT-120-120-FT	120	3.04	1203.04	1.00	H1-1.6	
RT-130-130-FT	130	3.30	1303.30	1.00	H1-1.6	
RT-140-140-FT	140	3.55	1403.55	1.00	H1-1.6	
RT-150-150-FT	150	3.81	1503.81	1.00	H1-1.6	
RT-160-160-FT	160	4.06	1604.06	1.00	H1-1.6	
RT-170-170-FT	170	4.31	1704.31	1.00	H1-1.6	
RT-180-180-FT	180	4.57	1804.57	1.00	H1-1.6	
RT-190-190-FT	190	4.82	1904.82	1.00	H1-1.6	
RT-200-200-FT	200	5.08	2005.08	1.00	H1-1.6	
RT-220-220-FT	220	5.58	2205.58	1.50	H2-2.6	



型號(常溫)	A		B		ID/內徑	杆型
	mil	mm	mil	mm	mm	接口 mm
RT-040-060	40	1.02	60	1.52	0.30	H1-1.6
RT-040-080	40	1.02	80	2.03	0.30	H1-1.6
RT-050-070	50	1.27	70	1.78	0.30	H1-1.6
RT-050-090	50	1.27	90	2.29	0.30	H1-1.6
RT-050-150	50	1.27	150	3.81	0.30	H1-1.6
RT-060-060	60	1.52	60	1.52	0.30	H1-1.6
RT-060-090	60	1.52	90	2.29	0.30	H1-1.6
RT-070-070	70	1.78	70	1.78	0.30	H1-1.6
RT-070-090	70	1.78	90	2.29	0.30	H1-1.6
RT-070-100	70	1.78	100	2.54	0.30	H1-1.6
RT-070-120	70	1.78	120	3.05	0.30	H1-1.6
RT-070-140	70	1.78	140	3.56	0.30	H1-1.6
RT-080-080	80	2.03	80	2.03	0.30	H1-1.6
RT-080-100	80	2.03	100	2.54	0.30	H1-1.6
RT-080-120	80	2.03	120	3.05	0.30	H1-1.6
RT-090-090	90	2.29	90	2.29	0.30	H1-1.6
RT-090-110	90	2.29	110	2.79	0.30	H1-1.6
RT-090-150	90	2.29	150	3.81	0.30	H1-1.6
RT-100-100	100	2.54	100	2.54	0.30	H1-1.6
RT-100-130	100	2.54	130	3.30	0.30	H1-1.6
RT-200-200	200	5.08	200	5.08	0.30	H2-2.6
RT-210-210	210	5.33	210	5.33	0.30	H2-2.6
RT-220-220	220	5.59	220	5.59	0.40	H2-2.6
RT-240-240	240	6.10	240	6.10	0.40	H2-2.6
RT-260-260	260	6.35	260	6.35	0.40	H2-2.6
RT-280-280	280	6.60	280	6.60	0.40	H2-2.6
RT-300-300	300	7.62	300	7.62	0.40	H2-2.6



應用設備: 自動機固晶機, 如 ASM, 威控
 說明: 標準規格、依客戶需求訂作
 材質: 橡膠



楷承有限公司

KAICHENG CO., LTD.

台中市大里區新仁2街66號

TEL : 886-4-22751409 FAX : 886-4-22706183

E-mail : kaicheng0826@gmail.com

http://www.kaicheng-ltd.com